

TREE MITIGATION - REPLANTING PLAN

July 9, 2025

Oregon City Parks and Recreation
Oregon City Operations Center
13895 Fir Street
Oregon City, OR 97045
Attn: Brandon Watt



Clackamas Office
11814 SE Jennifer St.
Clackamas, OR 97015
Office: 503-722-7267

Brandon Watt,

You requested that I provide a mitigation plan showing the proposed location of mitigation trees, species and proposed planting date. I visited the site at The Oregon City Public Library to assess the tree on June 2nd, 2025. This letter is intended to accompany your tree removal permit process. My recommendations of species proposed for replanting and ideal planting dates and/or conditions are found below.

Proposed Species for Replanting – Option #1

Qty.	Common Name and Species	Caliper	Planting Dates	Description
1	Accolade™ elm - <i>Ulmus davidiana</i> var. <i>japonica</i> 'Morton'	2">	Winter 2025-Spring 2026 Or when adequate irrigation for newly planted trees is readily available into Winter 2025	<ul style="list-style-type: none">• Height: 50 to 60 feet• Spread: 30 to 40 feet



Photo 1: *Ulmus davidiana* var.
japonica 'Morton'

General Information

Scientific name: *Ulmus davidiana* var. *japonica* 'Morton'

Pronunciation: UL-mus MORTON

Common name(s): Accolade™ elm

Family: Ulmaceae

USDA hardiness zones: 5 through 8

Uses: ACCOLADE is a vase shaped, medium to large, deciduous elm that reportedly has excellent resistance to Dutch elm disease, elm leaf miner and elm leaf beetle. In addition to its excellent disease and pest resistance, it is also noted for its vigorous growth, glossy dark green foliage and good yellow fall color.

Availability: generally available in many areas within its hardiness range

Proposed Species for Replanting – Option #2

Qty.	Common Name and Species	Caliper	Planting Dates	Description
1	Frontier Elm- <i>Ulmus 'Frontier'</i>	2">	Winter 2025-Spring 2026 Or when adequate irrigation for newly planted trees is readily available into Winter 2025	<ul style="list-style-type: none"> • Height: 30-40 feet • Spread: 20-30 feet

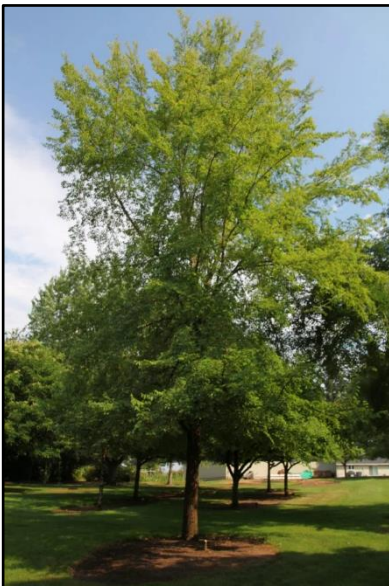


Photo 2: *Ulmus 'Frontier'*

General Information

Scientific name: *Ulmus 'Frontier'*

Pronunciation: UL-mus

Common name(s): frontier elm

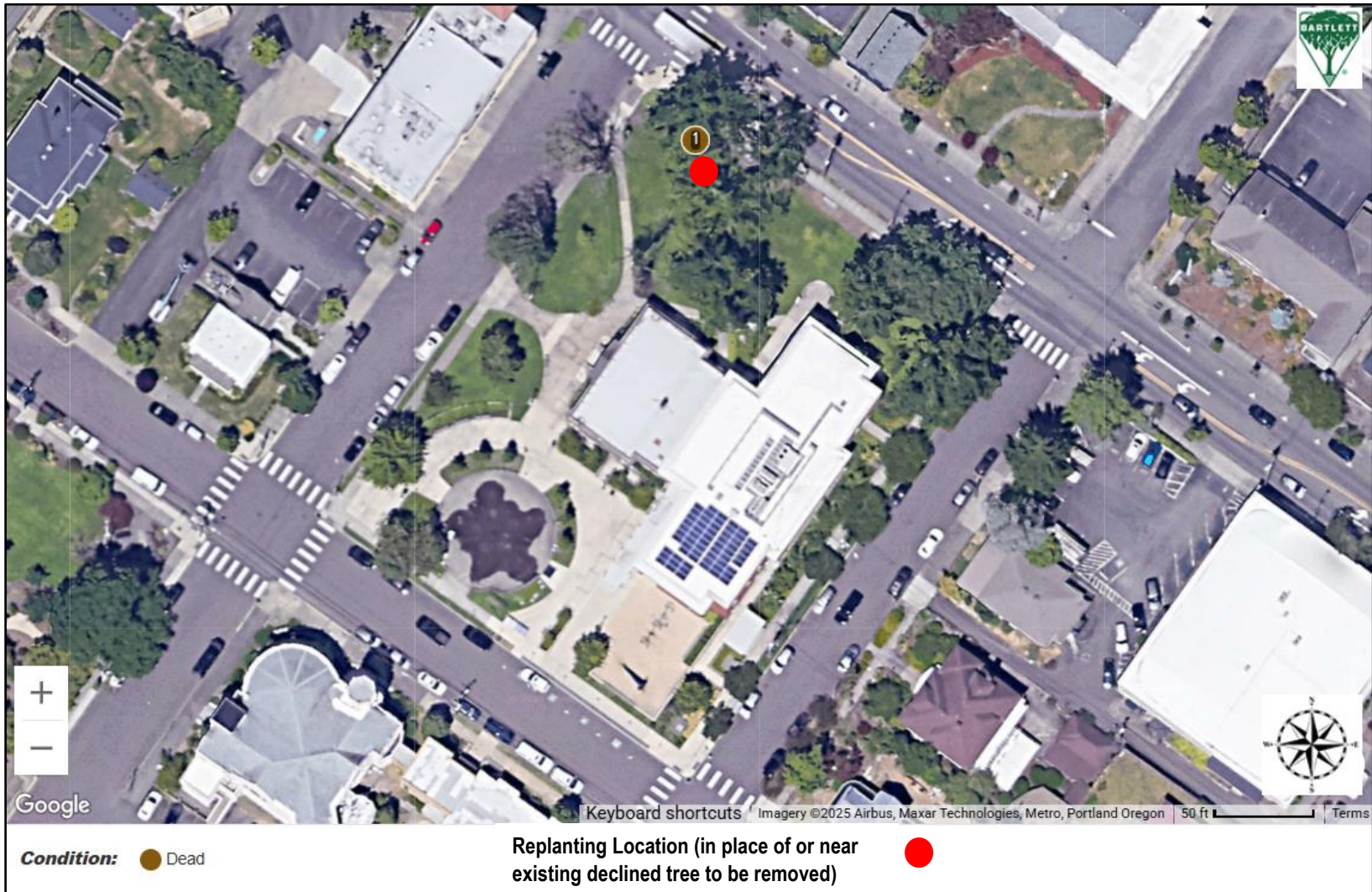
Family: Ulmaceae

USDA hardiness zones: 4 through 7

Uses: The Frontier Elm is a cultivar of *Ulmus parvifolia*, called the Chinese or Lacebark Elm, which is native to much of Eastern Asia. This cultivar has been developed for its good resistance to the deadly Dutch elm disease, elm yellows, and the elm leaf beetle. This medium-sized tree is hardy and tolerant to drought, heat, and poor soil which make it well suited as a replacement for the many elms used residential landscapes and city streets that in the future will no longer be viable due to disease and climate stressors.

Availability: generally available in many areas within its hardiness range

Mitigation Plan Map



General Planting Guidelines

Successful tree planting involves matching the species to the site and using proper techniques. Assess the soil and site characteristics to ensure compatibility. Use small caliper trees for better root regeneration and survival rates. Prepare a wide planting area, making the hole 3-5 times wider than the root ball and no deeper than the root ball itself. Ensure the root collar is flush with the natural grade and remove any deformed roots. Water newly planted trees at least twice per week concentrating water on the root ball and immediately surrounding soil of newly planted trees. Finally, apply a two-to-three-inch layer of organic mulch, such as arborist woodchips, to conserve soil moisture and moderate soil temperature, and monitor the plant's health regularly to address any issues early.

Please feel free to contact me if you have any questions about my observations and recommendations.

Prepared by:

Ryan Fay
Field Consulting Arborist
ISA Certified Arborist PN-8521A
ISA Tree Risk Assessment Qualified

Provided by:

Lyle Feilmeier
Regional Commercial Arborist Representative
ISA Board Certified Master Arborist
ISA Tree Risk Assessment Qualified

A handwritten signature in black ink, appearing to read 'Ryan Fay', with a stylized, flowing script.

Ryan Fay
Field Consulting Arborist