



## Updates to the 2013 Oregon City TSP

As shown in Table 4, most of the major street system improvements planned for the South End Concept Plan area were previously incorporated into the 2013 Oregon City TSP. Only the design types for the Madrona Drive extension and South End Road enhancement projects were slightly modified, increasing the project cost for intersections and the major street system in the South End Concept Plan area by about \$330,000.

**Table 4: Major Street and Intersection Improvements in the South End Concept Plan Area**

Project	Estimated Cost	Project Source
Install a traffic signal at the South End Road/ South 2 <sup>nd</sup> Street intersection	\$315,000	2013 Oregon City TSP Project D31
Install a traffic signal at the South End Road/ Warner Parrott Road intersection with dedicated left turn lanes for the South End Road approaches to Warner Parrott Road	\$345,000	2013 Oregon City TSP Project D32
Install a roundabout at the South End Road/ Lafayette Avenue-Partlow Road intersection	\$475,000	2013 Oregon City TSP Project D33
Install a roundabout at the South End Road/ Beutel Road-Parrish Road intersection	\$500,000	2013 Oregon City TSP Project D41
Install a roundabout at the South End Road/ Deer Lane extension intersection	\$505,000	2013 Oregon City TSP Project D42
Extend Deer Lane from Rose Road to Buetel Road as a Residential Collector	\$3,500,000	2013 Oregon City TSP Project D51
Extend Deer Lane east from Buetel Road to Central Point Road as a Residential Collector	\$7,335,000	2013 Oregon City TSP Project D52
Extend Madrona Drive to Deer Lane as a Family Friendly Collector	<b><i>\$565,000</i></b> <b><i>(+\$90,000 from the TSP)</i></b>	Modified version of 2013 Oregon City TSP Project D53 (Change from Residential Collector to Family Friendly Collector)
Complete the gap between Parrish Road as a Residential Collector	\$1,870,000	2013 Oregon City TSP Project D65
Improve South End Road from Partlow Road to south of South End Court to a Residential Minor Arterial	<b><i>\$3,870,000</i></b> <b><i>(+\$240,000 from the TSP)</i></b>	Modified version of 2013 Oregon City TSP Project D89 (Street type changes for two segments from Residential to Mixed-Use)
Improve South End Road from south of South End Court to north of Fandango Drive to a Mixed-Use Minor Arterial		
Improve South End Road from north of Fandango Drive to north of Navajo Way as a Residential Minor Arterial		
Improve South End Road from north of Navajo Way to north of the Deer Lane extension as a Mixed-Use Minor Arterial		
Improve South End Road from north of the Deer Lane extension south to the UGB as a Residential Minor Arterial		
Improve Beutel Road north of South End Road as a Residential Collector	\$955,000	2013 Oregon City TSP Project D93
<b>Total</b>	<b>\$20,235,000</b>	



Figure 7: Multi-Modal Street System

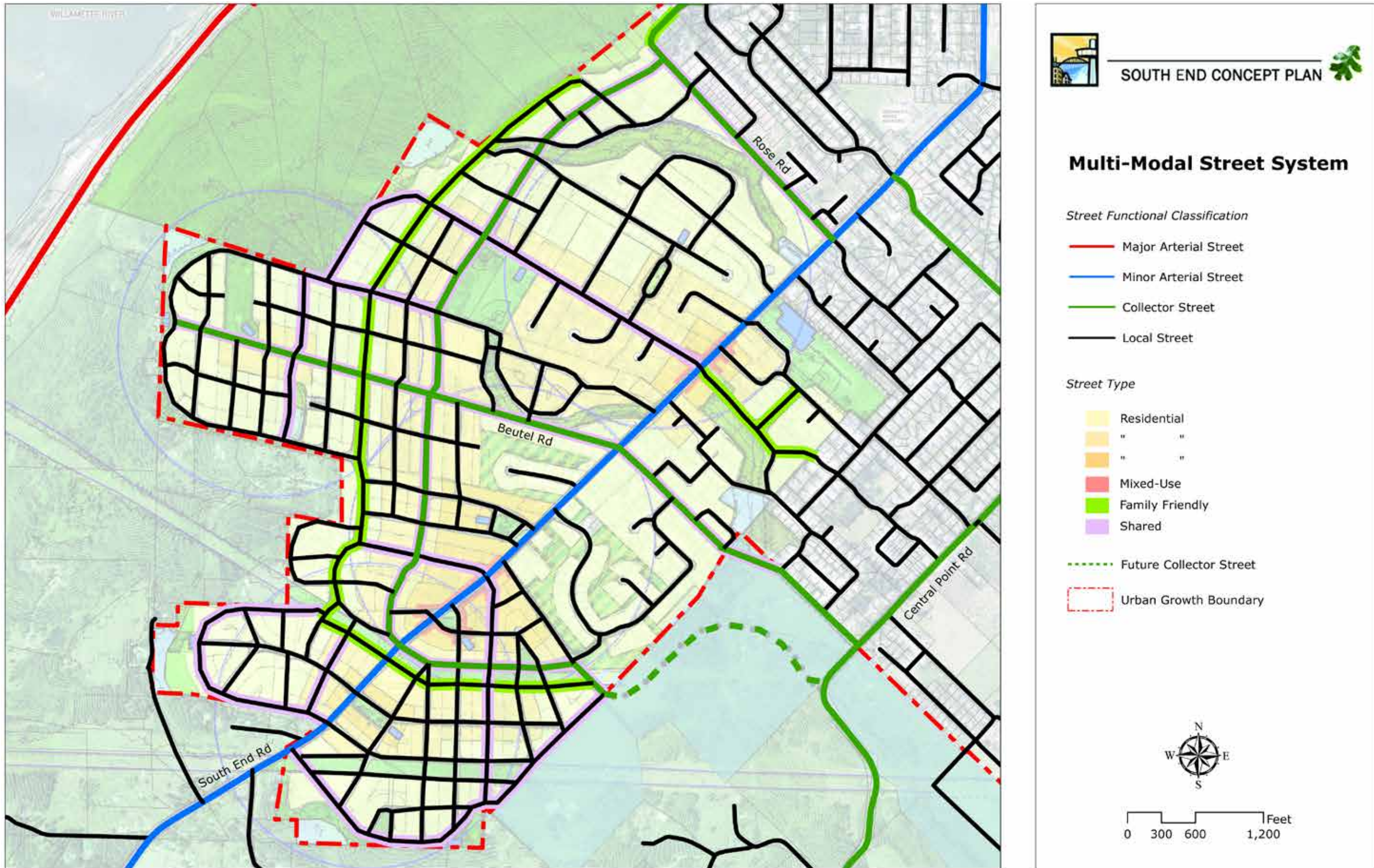




Figure 8: Street Design Types

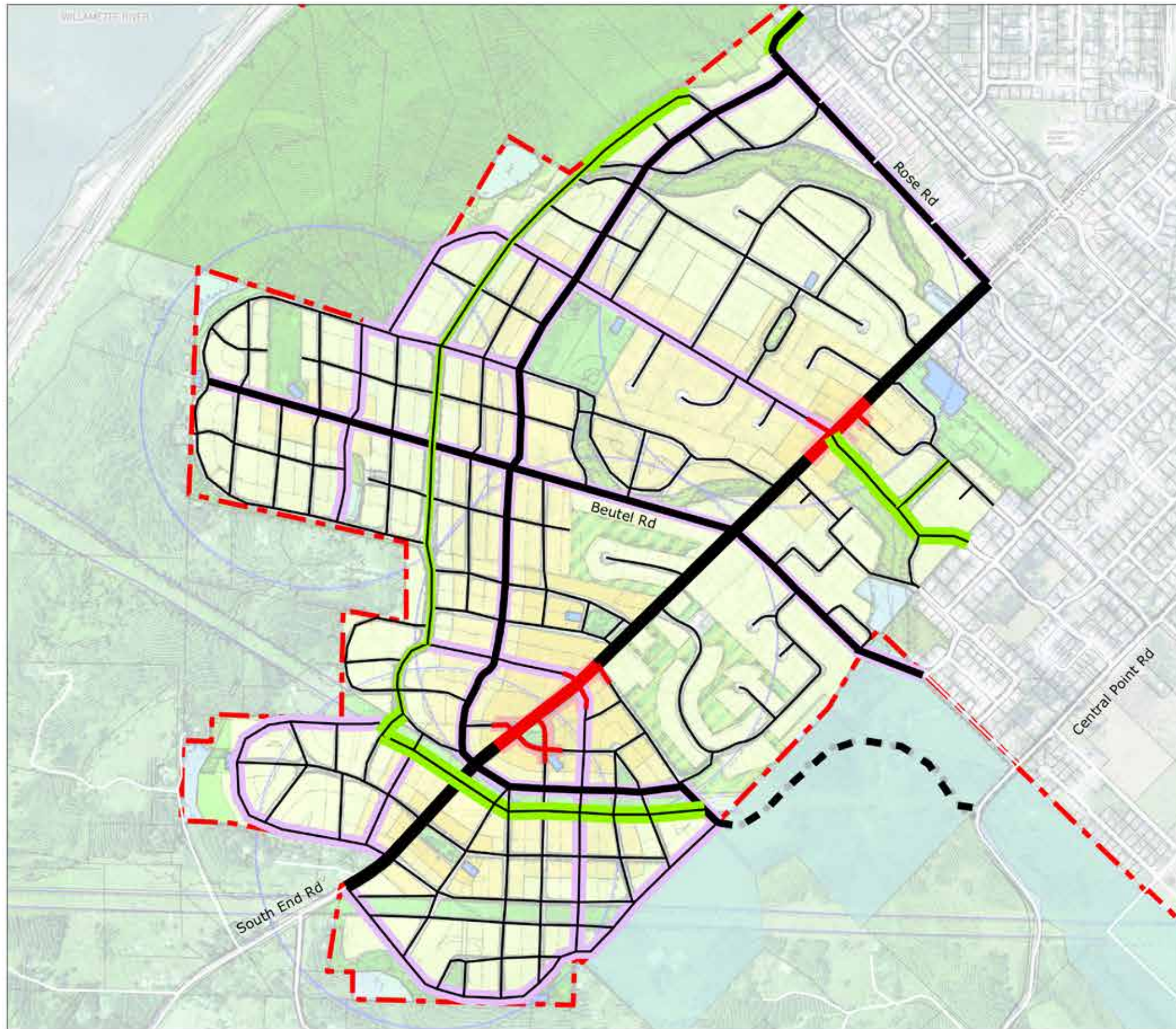




Figure 9: Walking and Biking Network

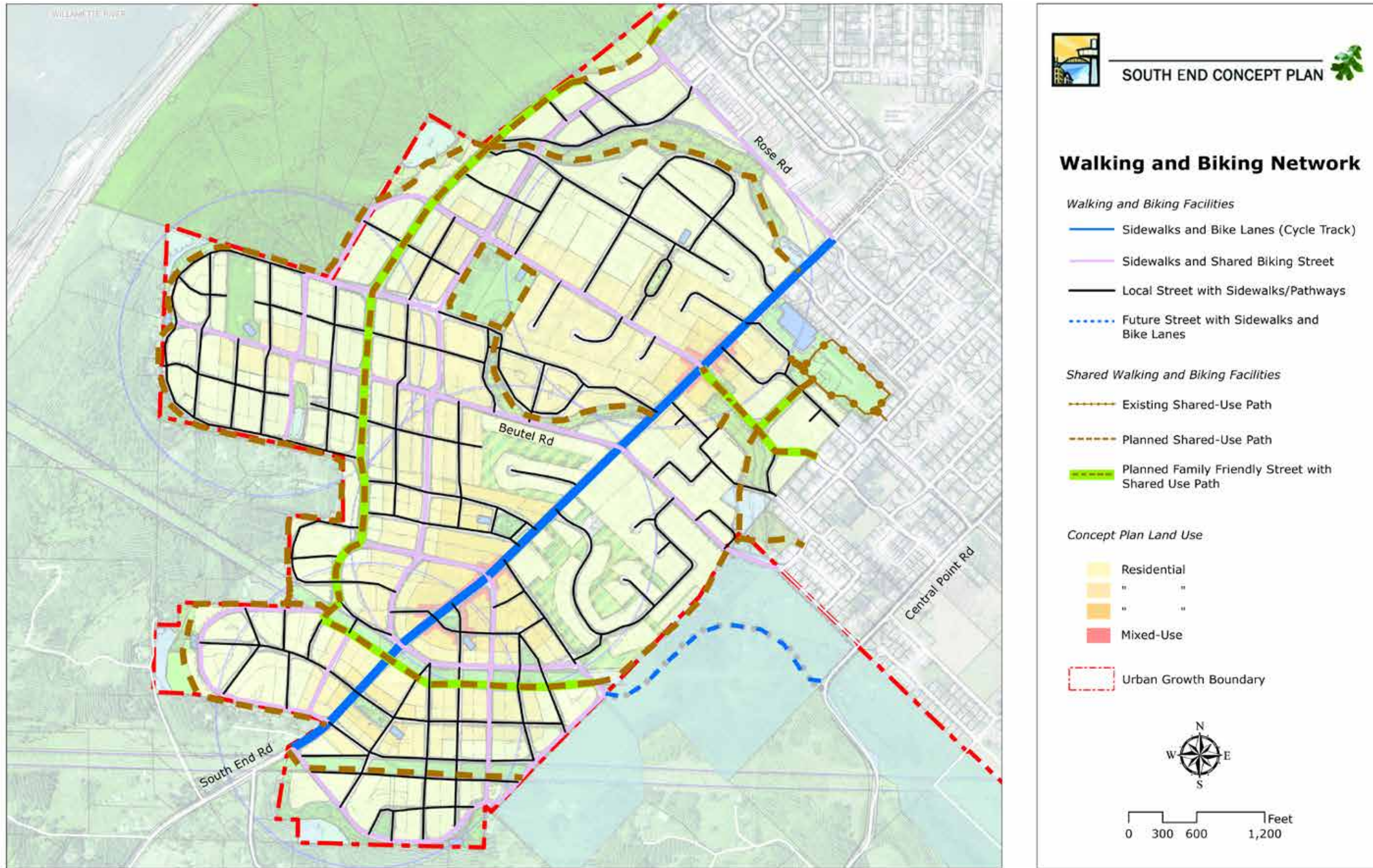




Figure 10: Transit Options for the South End Concept Plan Area

