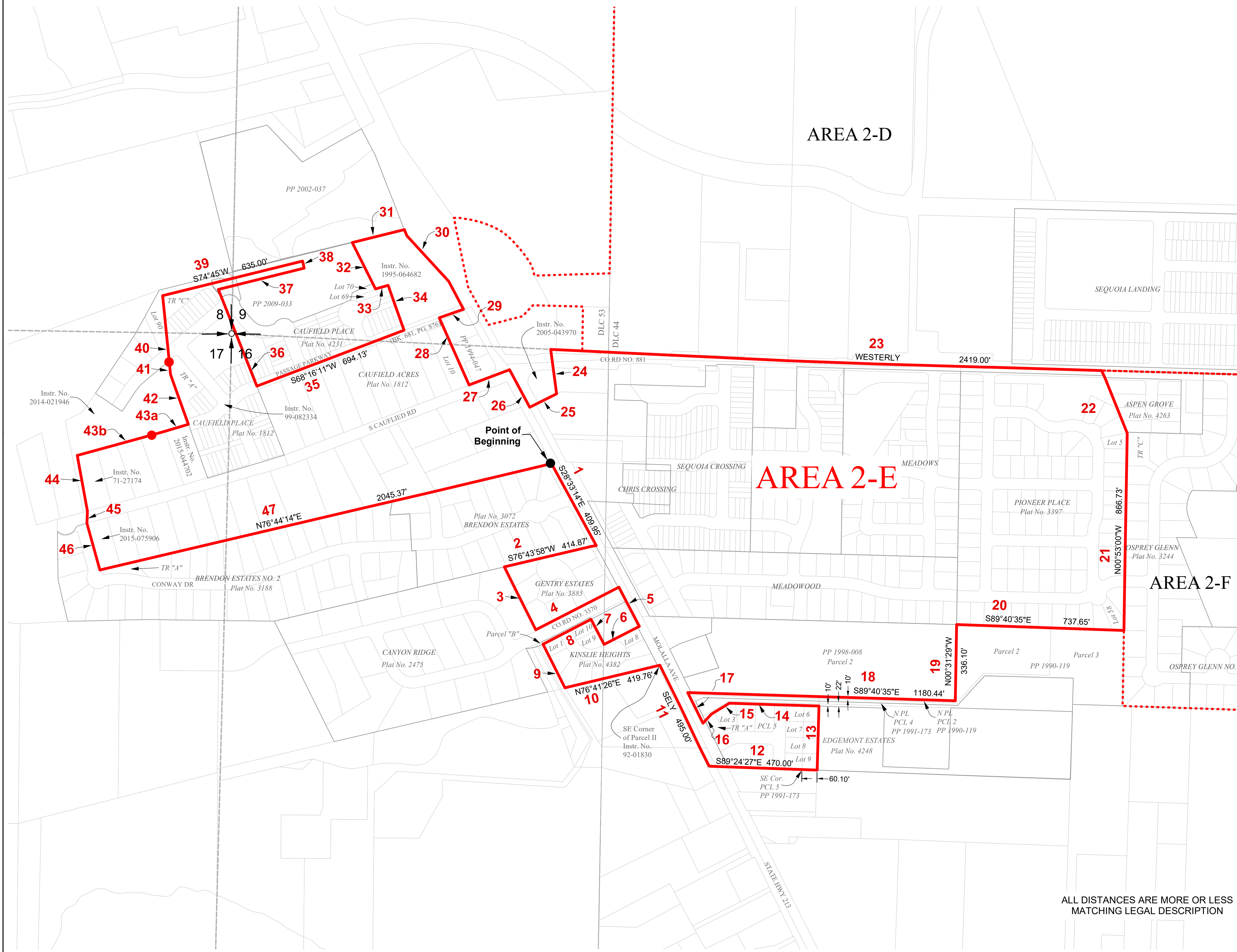


AREA 2-E

CLACKAMAS RIVER WATER DISTRICT WITHDRAWAL - EXHIBIT 2-E.2

THOSE PORTIONS OF LAND LYING IN SECTION 08 AND THOSE PORTIONS LYING IN SECTION 09 AND THOSE PORTIONS LYING IN SECTION 16 AND THOSE PORTIONS LYING IN SECTION 17, TOWNSHIP 3 SOUTH, RANGE 2 EAST, WILLAMETTE MERIDIAN, CITY OF OREGON CITY, CLACKAMAS COUNTY, OREGON

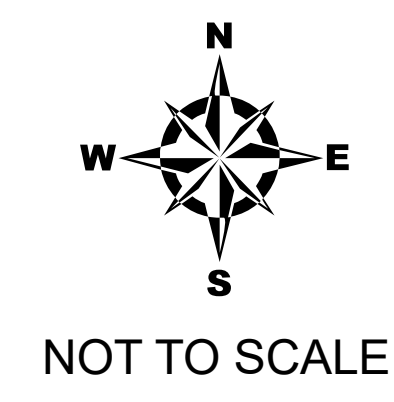
Ordinance No. 21-1013



LINE TABLE		
COURSE NO.	BEARING	DISTANCE
3	S26°31'00"E	310.08'
4	N62°45'39"E	410.98'
5	SELY	188.07'
6	S62°51'26"W	166.42'
7	N27°08'25"W	124.79'
8	SWLY	238.67'
9	S26°32'10"E	215.86'
13	N00°19'25"E	282.34'
14	N89°40'35"W	395.20'
15	S57°30'34"W	92.91'
16	S41°30'14"W	54.11'
17	N27°45'47"W	151.00'
22	N21°58'50"W	296.00'
24	S05°05'04"E	165.00'
25	S60°38'00"W	134.72'
26	NWLY	200.00'
27	S68°17"W	180.00'
28	N24°31'28"W	312.55'
29	N68°14'50"E	117.54'
30	NWLY	450.00'
31	S75°13'55"W	236.00'
32	S27°41'03"E	229.05'
33	N73°20'57"E	57.69'
34	S20°17'32"E	200.35'
36	N22°39"W	434.00'
37	N74°45'E	410.00'
38	NLY	30.00'
40	S06°40'00"E	289.00'
41	S06°40'00"E	62.30'
42	S20°40'17"E	234.66'
43a	S72°20'06"W	166.28'
43b	S73°42'06"W	349.33'
44	S12°30'53"E	249.82'
45	SLY	52.00'
46	S15°19'43"E	213.88'

LEGEND

- Withdrawal Boundary Area 2-E
- Subdivisions
- Surrounding Withdrawal Boundary Areas
- 2-D
- 2-F
- PLSS Section Line
- Parcel Boundary
- Donation Land Claims
- 1 Legal Description Course Number
- NPL North Property Line



ALL DISTANCES ARE MORE OR LESS MATCHING LEGAL DESCRIPTION

JOB NO.: 5011-0512	REVISION: 10/13/21
DATE:	
DRAWN BY: BAJ	REVISION: 10/15/21
CHECKED BY: PHR	
APPROVED BY: AMB	REVISION: 4/5/22