

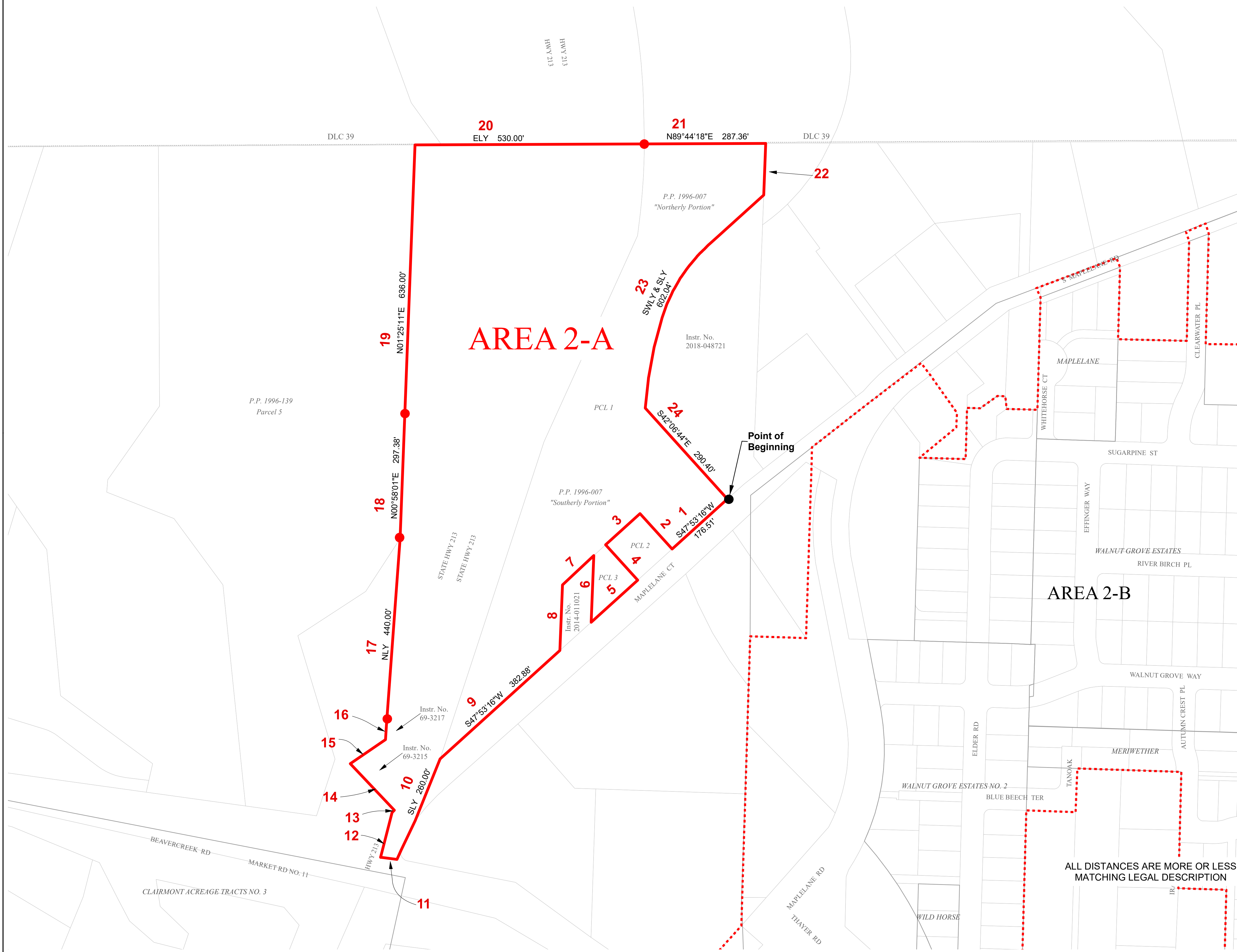
AREA 2-A

CLACKAMAS RIVER WATER DISTRICT WITHDRAWAL - EXHIBIT 2-A.2

Ordinance No. 21-1013

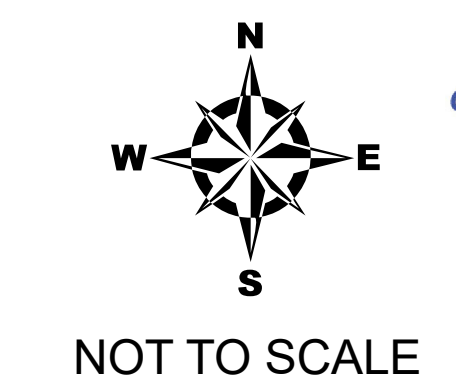
THOSE PORTIONS OF LAND LYING IN THE SOUTH HALF OF SECTION 04, TOWNSHIP 3 SOUTH, RANGE 2 EAST, WILLAMETTE MERIDIAN, CITY OF OREGON CITY, CLACKAMAS COUNTY, OREGON

LINE TABLE		
COURSE NO.	BEARING	DISTANCE
2	N42°06'44"W	113.13'
3	S47°53'16"W	110.00'
4	S42°06'44"E	113.13'
5	S47°53'16"W	148.33'
6	N02°11'33"E	158.08'
7	S47°53'16"W	100.00'
8	S02°11'33"W	158.08'
11	WLY	30.00'
12	N14°24'E	109.37'
13	N46°29'E	7.50'
14	N43°31'W	152.75'
15	N56°10'E	101.46'
16	N5°40'30"E	39.64'
22	S02°11'33"W	122.37'



LEGEND

- Withdrawal Boundary Area 2-A
- Surrounding Withdrawal Boundary Areas 2-B
- PLSS Section Line
- Subdivisions
- Parcel Boundary
- Donation Land Claims
- 1 Legal Description Course Number



PREPARED FOR
CITY OF OREGON CITY

PREPARED BY
CLACKAMAS RIVER WATER

JOB NO.: 5011-0512	REVISION: 6-15-21
DATE:	
DRAWN BY: BAJ	REVISION:
CHECKED BY: PHR	
APPROVED BY: AMB	

ALL DISTANCES ARE MORE OR LESS MATCHING LEGAL DESCRIPTION