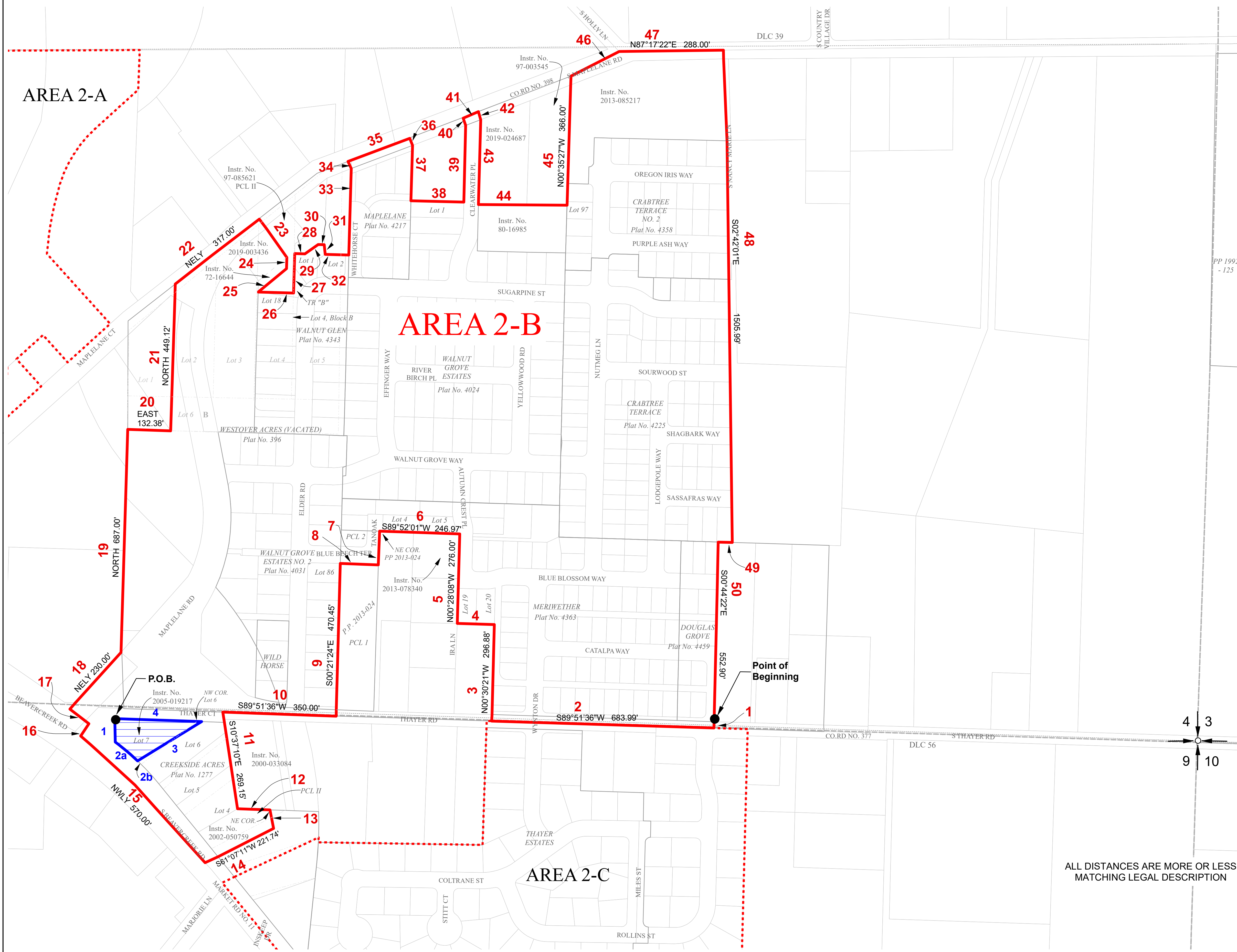


# AREA 2-B

# CLACKAMAS RIVER WATER DISTRICT WITHDRAWAL - EXHIBIT 2-B.2

THOSE PORTIONS OF LAND LYING IN SECTION 04 AND THOSE PORTIONS LYING IN THE NORTH HALF OF SECTION 09, TOWNSHIP 3 SOUTH, RANGE 2 EAST, WILLAMETTE MERIDIAN, CITY OF OREGON CITY, CLACKAMAS COUNTY, OREGON

Ordinance No. 21-1013

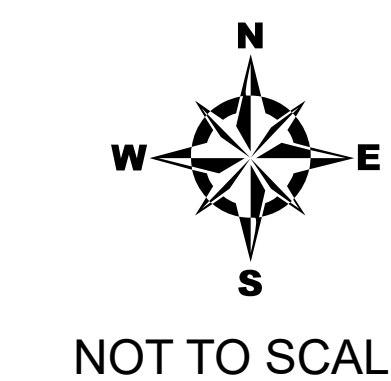


LINE TABLE		
COURSE NO.	BEARING	DISTANCE
1	S00°08'24"E	20.00'
4	S89°52'01"W	113.81'
7	S00°27'24"E	102.10'
8	S89°39'27"W	117.58'
12	EAST	100.00'
13	SELY	58.66'
16	NELY	30.00'
17	NWLY	80.00'
23	S40°13'E	145.00'
24	SOUTH	35.00'
25	S49°42'W	108.00'
26	N89°37'10"E	109.41'
27	N00°24'08"W	121.28'
28	N89°33'15"E	31.24'
29	N52°41'43"E	50.01'
30	N89°33'15"E	18.70'
31	S07°46'26"E	30.25'
32	N89°33'15"E	73.04'
33	N00°22'52"W	262.00'
34	N32°43'01"W	30.00'
35	N67°16'59"E	201.24'
36	S32°43'01"E	30.00'
37	S00°26'24"E	170.66'
38	N89°24'58"E	162.79'
39	N00°35'02"W	236.07'
40	N22°36'46"W	30.00'
41	N67°23'14"E	48.54'
42	S22°36'46"E	30.00'
43	S00°35'02"E	256.12'
44	N89°02'00"E	271.55'
46	N67°22'10"E	196.00'
49	S89°51'20"W	43.48'

EXCEPT-LINE TABLE		
COURSE NO.	BEARING	DISTANCE
1	S02°48'58"E	71.89'
2a	S48°09'15"E	90.34'
2b	N48°09'15"W	15.00'
3	NELY	15.00'
4	WEST	267.11'

**LEGEND**

- Withdrawal Boundary Area 2-B
- To Remain CRW District Boundary
- Surrounding Withdrawal Boundary Areas
- 2-C
- 2-A
- PLSS Section Line
- Subdivisions
- Parcel Boundary
- Donation Land Claims
- 1 Legal Description Course Number



ALL DISTANCES ARE MORE OR LESS MATCHING LEGAL DESCRIPTION

PREPARED FOR  
CITY OF OREGON CITY  
PREPARED BY  
CLACKAMAS RIVER WATER

JOB NO.: 5011-0512	REVISION: 7/13/21
DATE:	
DRAWN BY: BAJ	REVISION: 8/9/21
CHECKED BY: PHR	
APPROVED BY: AMB	