

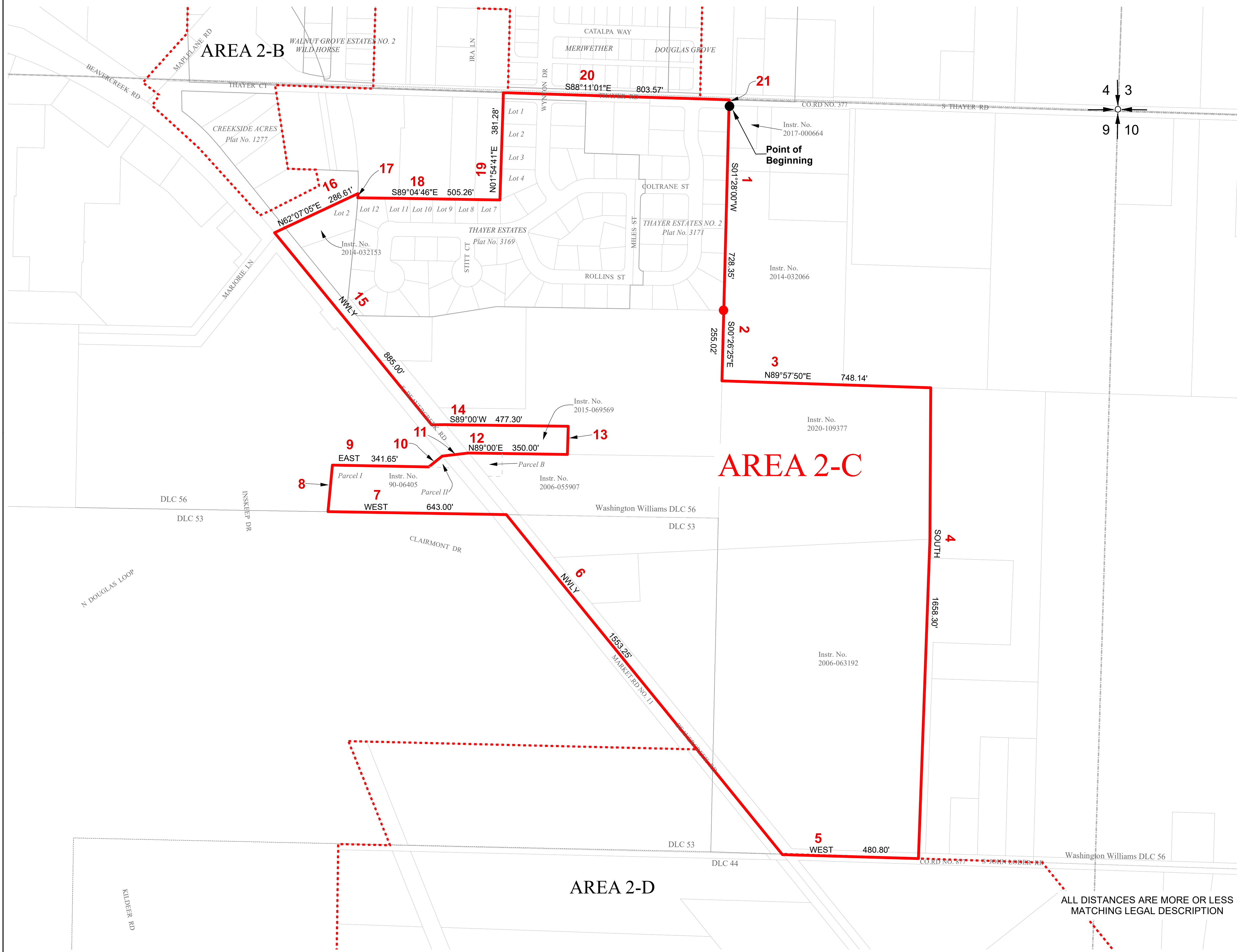
AREA 2-C

CLACKAMAS RIVER WATER DISTRICT WITHDRAWAL - EXHIBIT 2-C.2

Ordinance No. 21-1013

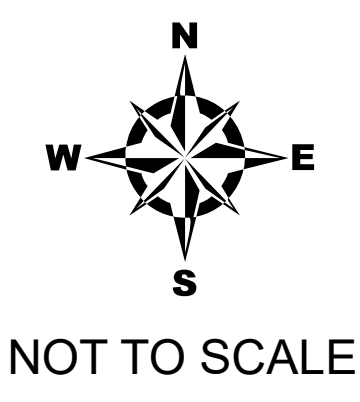
THOSE PORTIONS OF LAND LYING IN SECTION 09 TOWNSHIP 3 SOUTH, RANGE 2 EAST, WILLAMETTE MERIDIAN, CITY OF OREGON CITY, CLACKAMAS COUNTY, OREGON

LINE TABLE		
COURSE NO.	BEARING	DISTANCE
8	N04°54'E	166.80'
10	NELY	81.42'
11	ELY	90.00'
13	N00°24'W	100.00'
17	SLY	13.40'
21	S01°28'00"W	20.00'



AREA 2-C

	Withdrawal Boundary Area 2-C		Subdivisions
	Surrounding Withdrawal Boundary Areas 2-A 2-B 2-D		Parcel Boundary
	PLSS Section Line		Donation Land Claims
			Legal Description Course Number



PREPARED FOR
 CITY OF OREGON CITY
PREPARED BY
 CLACKAMAS RIVER WATER

JOB NO.: 5011-0512	REVISION: 7/9/21
DATE:	REVISION: 9/17/21
DRAWN BY: BAJ	
CHECKED BY: PHR	
APPROVED BY: AMB	

ALL DISTANCES ARE MORE OR LESS MATCHING LEGAL DESCRIPTION