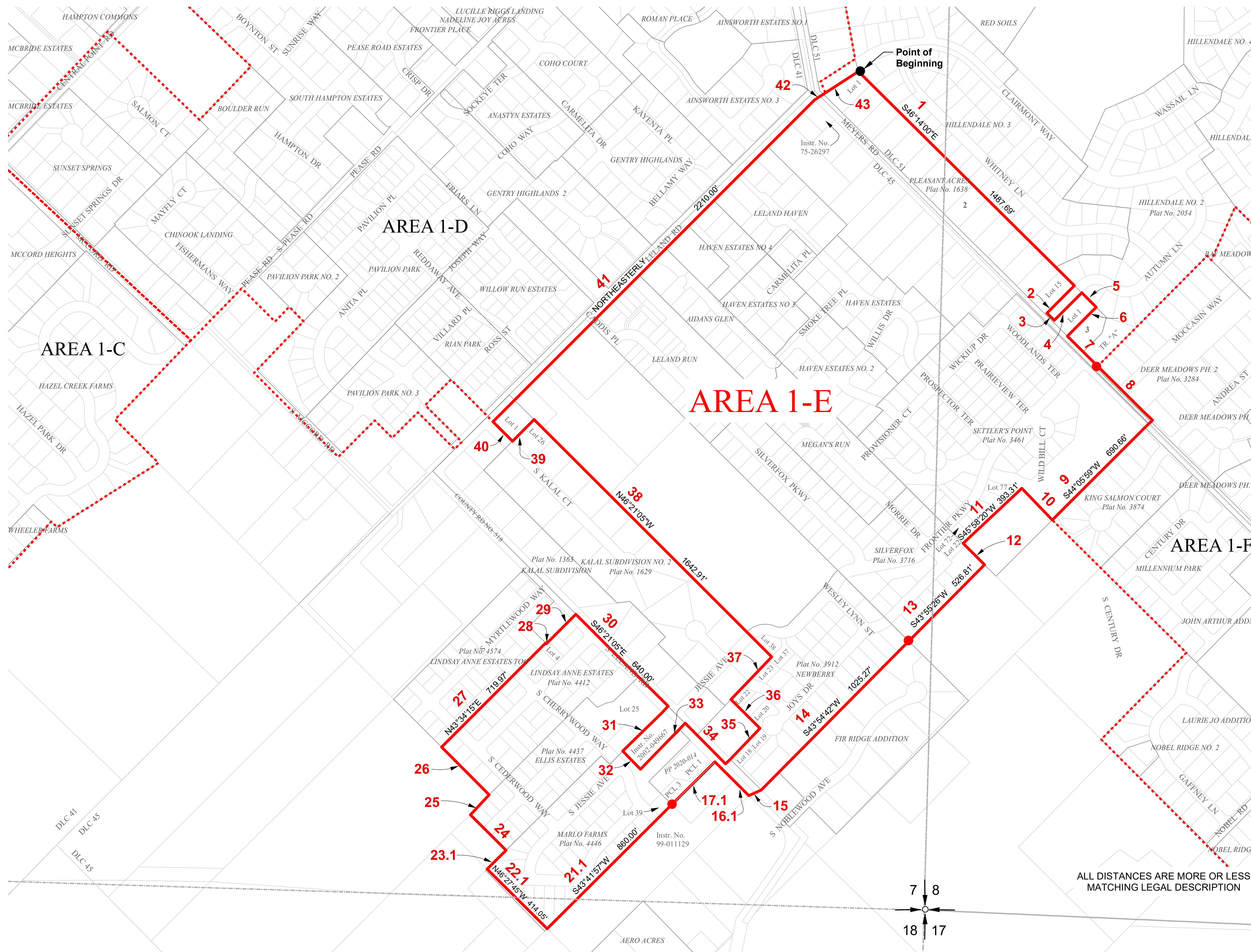


AREA 1-E

CLACKAMAS RIVER WATER DISTRICT WITHDRAWAL - EXHIBIT 1-E.2

THOSE PORTIONS OF LAND LYING IN THE EAST HALF OF SECTION 7, THOSE PORTIONS LYING IN IN THE WEST HALF OF SECTION 8 AND THOSE PORTIONS LYING IN IN THE NORTH HALF OF SECTION 18, TOWNSHIP 3 SOUTH, RANGE 2 EAST, WILLAMETTE MERIDIAN, CITY OF OREGON CITY, CLACKAMAS COUNTY, OREGON

Ordinance No. 21-1013



LINE TABLE		
COURSE NO.	BEARING	DISTANCE
2	S43°46'00"W	190.00'
3	S46°14'00"E	50.00'
4	N43°46'00"E	190.00'
5	S46°14'00"E	190.25'
6	S43°46'00"W	200.00'
7	S46°14'00"E	208.55'
8	S46°14'39"E	375.00'
10	N45°14'39"W	214.39'
12	S45°56'17"E	147.30'
15	SWLY	65.00'
16.1	N46°45'W	229.85'
17.1	S43°24'32"W	295.00'
23.1	N43°45'26"E	131.00'
24	N46°33'16"W	246.05'
25	N41°48'39"E	133.96'
26	N46°21'05"W	329.88'
28	S46°19'21"E	5.00'
29	N43°34'15"E	204.03'
31	S44°19'34"W	310.14'
32	S45°44'37"E	124.17'
33	N44°21'27"E	311.45'
34	S46°45'26"E	272.00'
35	N42°55'21"E	239.99'
36	N45°57'53"W	200.00'
37	N42°55'21"E	287.99'
39	S43°38'55"W	149.22'
40	N46°21'05"W	134.94'
42	NELY	60.00'
43	N56°00'00"E	192.89'

LEGEND

- PLSS Section Line
- Withdrawal Boundary Area 1-E
- Surrounding Withdrawal Boundary Areas
 - 1-C
 - 1-D
 - 1-F
- Subdivisions
- Parcel Boundary
- Donation Land Claims
- Legal Description Course Number

NOT TO SCALE

PREPARED FOR
 CITY OF OREGON CITY
 PREPARED BY
 CLACKAMAS RIVER WATER

JOB NO.: 5011-0512	REVISION: 3/11/21
DATE:	
DRAWN BY: BAJ	REVISION: 3/11/22
CHECKED BY: PHR	
APPROVED BY: AMB	

ALL DISTANCES ARE MORE OR LESS MATCHING LEGAL DESCRIPTION