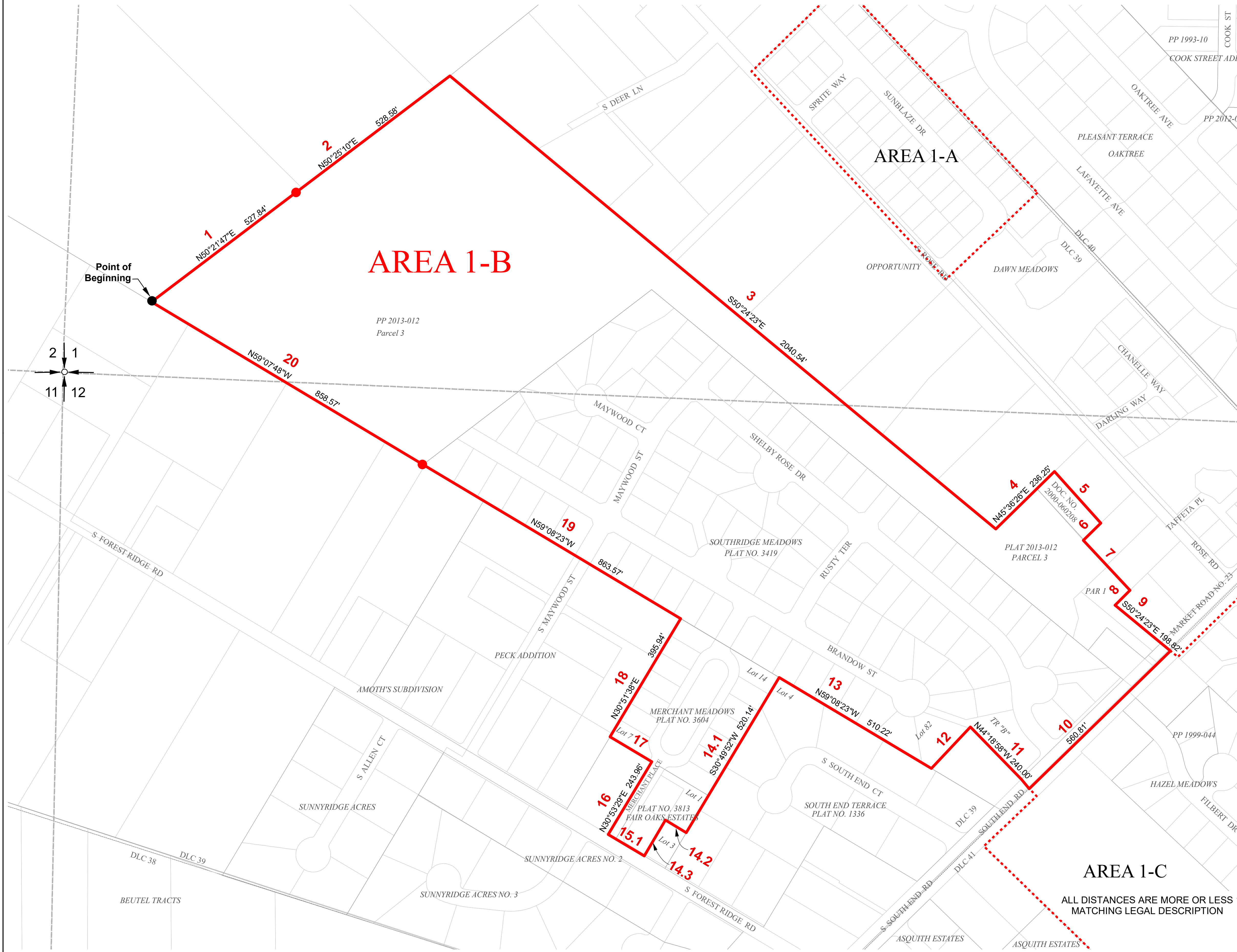


AREA 1-B

CLACKAMAS RIVER WATER DISTRICT WITHDRAWAL - EXHIBIT 1-B.2

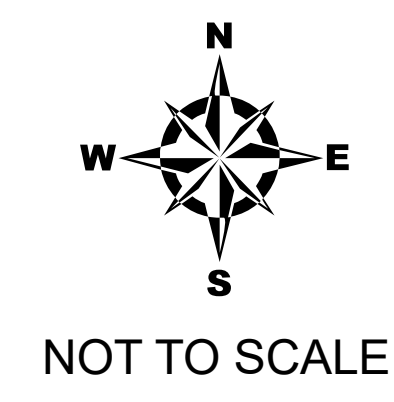
THOSE PORTIONS OF LAND LYING IN THE SOUTH HALF SECTION 1, TOWNSHIP 3 SOUTH, RANGE 1 EAST AND THOSE PORTIONS LYING IN THE NORTH HALF OF SECTION 12, TOWNSHIP 3 SOUTH, RANGE 1 EAST, WILLAMETTE MERIDIAN, CITY OF OREGON CITY, CLACKAMAS COUNTY, OREGON

Ordinance No. 21-1013



LINE TABLE		
COURSE NO.	BEARING	DISTANCE
5	S44°43'00"E	200.00'
6	S44°00'00"W	70.71'
7	S43°06'31"E	196.80'
8	S45°41'02"W	64.57'
12	S43°14'22"W	163.88'
14.2	N59°08'13"W	70.00'
14.3	S30°50'36"W	120.00'
15.1	N59°08'13"W	120.17'
17	N59°08'32"W	140.00'

LEGEND	
	Withdrawal Boundary Area 1-B
	Surrounding Withdrawal Boundary Areas 1-A 1-C
	PLSS Section Line
	Subdivision/Partition
	Parcel Boundary
	Donation Land Claims
	Legal Description Course Number



JOB NO.: 5011-0512	REVISION: 1/27/21
DATE:	
DRAWN BY: BAJ	REVISION: 2/25/22
CHECKED BY: PHR	
APPROVED BY: AMB	

AREA 1-C
ALL DISTANCES ARE MORE OR LESS
MATCHING LEGAL DESCRIPTION