



Oregon City Public Works
PO Box 3040
Oregon City, OR 97045

SANITARY SEWER SMOKE TESTING IN AUGUST

The City will smoke test sewers in portions of several basins in August. Turn over for map. We'll leave you a door hanger at least 24 hours before we start.

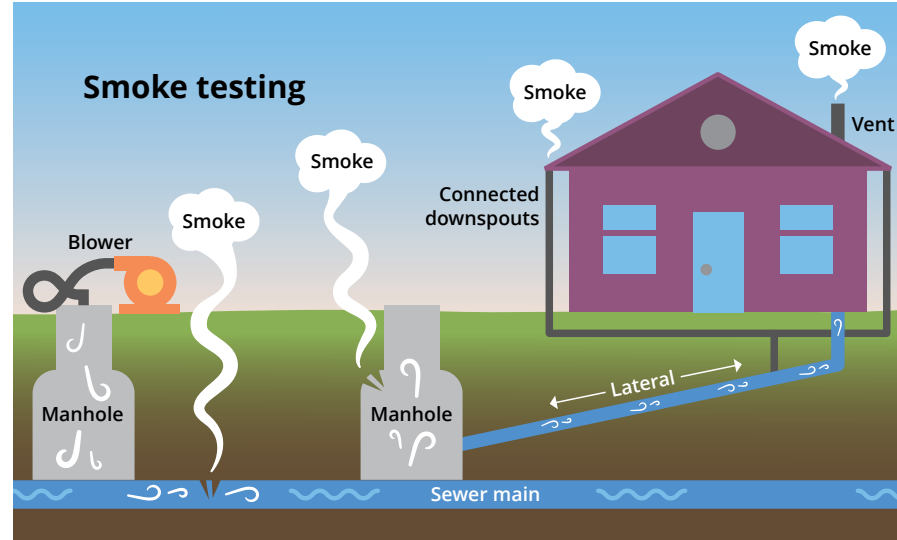
WHAT IS SMOKE TESTING?

Smoke testing is how we find cracks and improper connections to the sanitary sewer system. We blow smoke (or really, mist) into a sewer line and watch where it comes out.

THIS CAN SHOW US:

- Cracks in the sewer line
- Defective sewer connections
- Improper cross-connections with storm drains
- Building connections without proper traps or plumbing

Finding and fixing these sewer line problems helps protect public health and safety.



IS THE SMOKE HARMFUL?

No. It's not really smoke. It's a non-toxic, non-staining, odorless mist.

Even so, avoid direct exposure if you have respiratory problems like asthma or emphysema.

HOW DOES SMOKE TESTING WORK?

Crews block off a section of sewer line and use a blower to pump “smoke” into a manhole. Then they watch whether it comes out of the ground, buildings, other manholes, storm drains, and any other places that might indicate a problem with the sewer line. Crews flag these areas for further examination and repair.

DETAILS ARE COMING

We'll post a door hanger at your home before we start. It'll show how to prevent any “smoke” from entering your home, and what to do in case it does.

This is part of the City's greater Inflow and Infiltration Reduction Program.

QUESTIONS?

Kenny Cannady-Shultz

971-204-4622 | kshultz@orc.gov

bit.ly/OC-smoke-testing

Basins being tested

